

State of Wyoming Corner Record

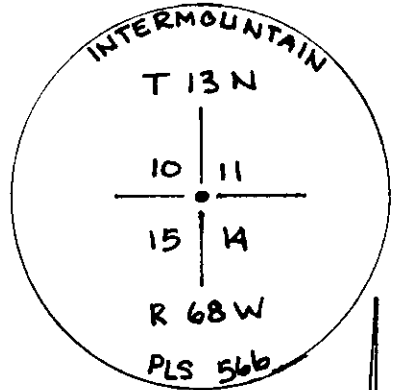
(In compliance with the *CORNER PERPETUATION AND FILING ACT*, Wyoming Statutes, 1977, Section 36-11-101, et. seq., and the Rules and Regulations of the Board of Registration for Professional Engineers and Professional Land Surveyors)

Reverse side of this form may be used if more space is needed.

Record of original survey and citation of source of historical information (if corner is lost or obliterated). Description of corner monumentation evidence found and/or monument and accessories established to perpetuate the location of this corner. Sketch of relative location of monument, accessories, and reference points with course and distance to adjacent corner(s) (if determined in this survey). Method and rationale for reestablishment of lost or obliterated corner.

FOUND: GRANITE STONE 18"x12"x6"
 SET: 3/4" ALUMINUM CAP ON 2 3/8" ALUMINUM PIPE STAMPED AS SHOWN
 REFERENCES SET: P.K. NAILS WITH WASHERS STAMPED LS 566
 GLO RECORD: GRANITE STONE 18"x12"x6"

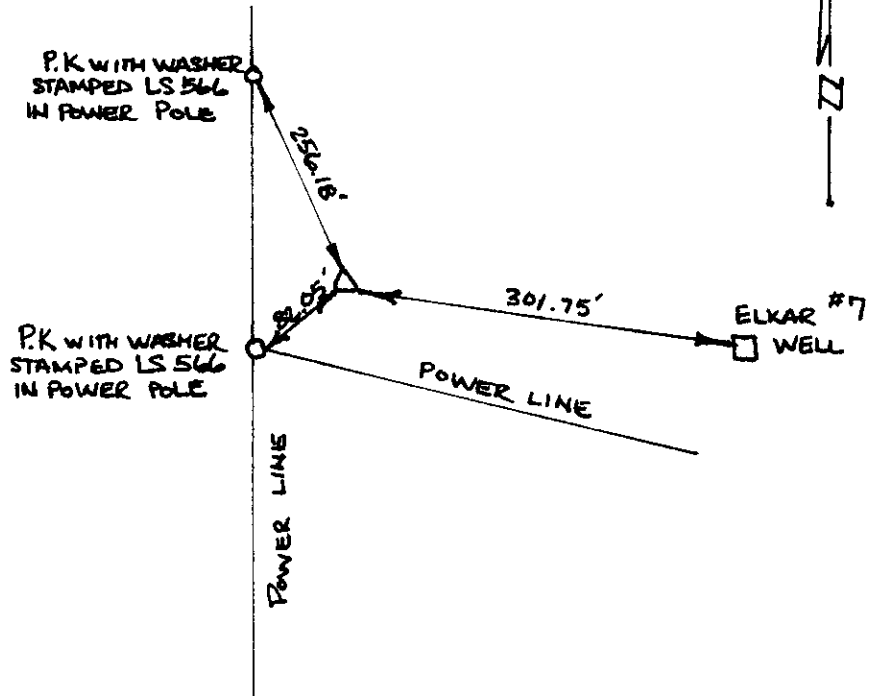
NOTE: STONE BURIED NEXT TO MONUMENT



LARAMIE COUNTY, WYOMING
CHEYENNE, WY.

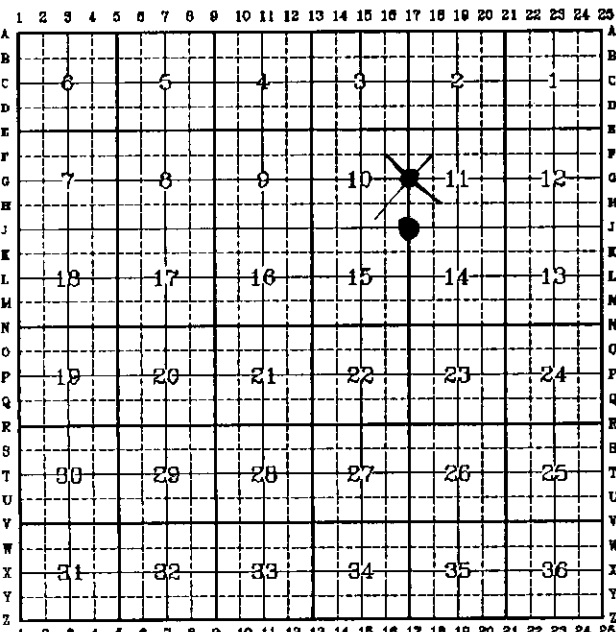
'96 SEP 13 AM 10 58

189579



Date of Field Work: July 12, 1995 Office Reference: 2854

CROSS INDEX DIAGRAM

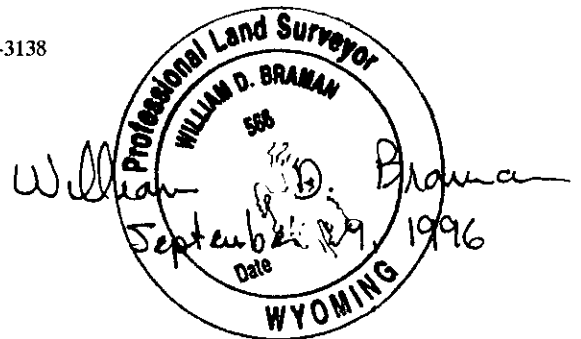


Firm/Agency, Address

INTERMOUNTAIN PROFESSIONAL SERVICES, INC.
5801 OSAGE AVENUE
CHEYENNE WY 82001

Telephone Number: (307) 632-3138

This corner record was prepared by me or under my direction and supervision.
SEAL & SIGNATURE



Corner Name: SEC COR 10/11 Section: T13N R68W; 6 P.M. Cross-Index No.: J-17
15/14